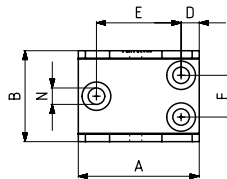
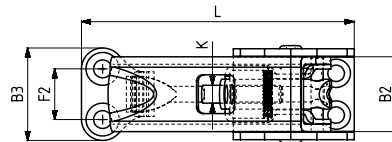
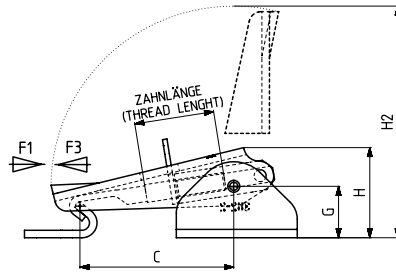


362



Modell Nr.	Rostfrei (Edelstahl) (STAINLESS)	F1 (N)	F3 (N)	Hub Zahnlänge (STROKE) (thread length)	Gewicht WEIGHT (gr)
362-1	S362 -	1400	1650	25	140
362-2	S362 -	1600	1800	25	160

F1 : Druckkraft (EXERTING FORCE), F3 : Haltekraft (HOLDING CAPACITY)



Befestigungsart : mit waagrechtm Fuß
Body Mounting Base: Horizontal

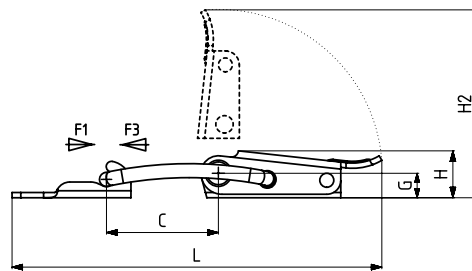
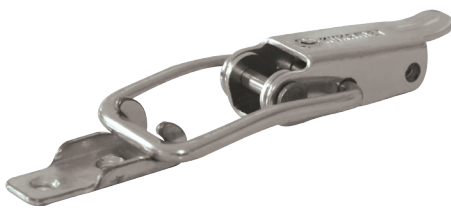
Modell Nr.	A	B	B2	B3	C Min	C Max	D	E	F	F2	G	H	H2	K	L Min	L Max	N
362-1	40	29,5	24	31	47	62	6	28	14	17	17	30	78	M6	86	101	Ø 5,5
362-2	40	30,5	25	31	47	62	6	28	14	17	17	30	78	M8	86	101	Ø 5,5

363

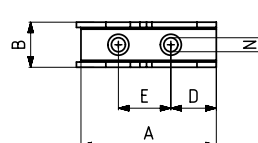
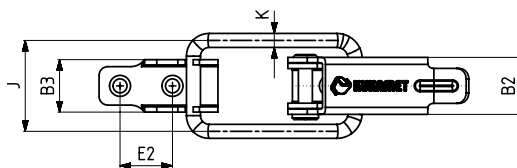


Modell Nr.	Rostfrei (Edelstahl) (STAINLESS)	F1 (N)	F3 (N)	Gewicht (WEIGHT) (gr)
363-2	S363-....	1500	1725	50

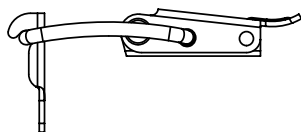
F1 : Druckkraft (EXERTING FORCE), F3 : Haltekraft (HOLDING CAPACITY)



POS 1



Befestigungsart : mit waagrechtm Fuß
Body Mounting Base: Horizontal



POS 2

Modell Nr.	A	B	B2	B3	C	D	E	E2	F	G	H	H2	J	K	L	M	N
363-2	38.5	13	16.3	15	32	13	15	15		7	13.5	54	25	4	106		Ø 4